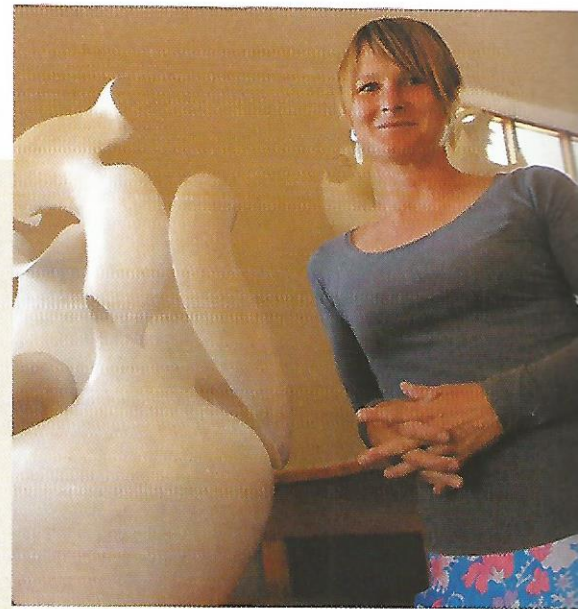


## Astrid Dahl (Route 4)

"I've been told that my work has the 'golden mean'," says ceramicist extraordinaire, Astrid Dahl, whose studio is on the family farm in Nottingham Road. It's a term that describes aesthetically pleasing proportions. And, indeed, Astrid's exquisite bone-white ceramic art stops you in your tracks. Inspired by plants – orchids one of her favourites – Astrid says her imagination also takes flight as she works with the clay. "It folds and curves and the piece develops a life of its own." In addition to the silky smooth pots for which she is internationally known (Jordan's Queen Rania is among her famous clients), Astrid creates lights using specially commissioned plaster moulds. Stark white and perfectly proportioned, the lights are set to be as sought after as Astrid's other artworks.

Visits by appointment.

084 799 8998, [www.astriddahl.co.za](http://www.astriddahl.co.za)



ABOVE: Astrid Dahl is renowned locally and abroad for her bone-white silken ceramic art.

BELOW LEFT: Family firm, left to right: Ryan and Sarah Adam, Clare Beith, Margie and Warwick Spowart at The Wine Cellar.



## The Wine Cellar and Mouse Trap Deli (Route 5)

"Nineteen years ago, we returned from a trip to the Cape, bringing wine not available in KZN," says Margie Spowart. "Our friends were thrilled." That triggered Margie and husband Warwick to open the first speciality wine store in KZN, in Rosetta. "Cape people said it wouldn't succeed because KZN folk were ignorant about wine," Warwick recalls.

The Wine Cellar and its deli have evolved into a veritable emporium and family firm. Margie's sister, Clare Beith ("I was bored at home") also helps in the café outside and runs a curiosity shop, Pandora's. Sarah Adam (Warwick and Margie's daughter) is taking things to a new level. Having spent eight seasons working in the Cape with cellar master, Riaan Marais, Sarah is a wine fundi herself. Three years ago, she took over several vines from a hobby winemaker in Greytown and planted them in Rosetta. "They've survived three winters so are now Rosetta grapes. It'll be a while before we know if they'll thrive. If they do, I'll be making my own wine."

Open daily 09h00-16h30  
033 267 7044, 082 923 8781  
[www.thewinecellar.co.za](http://www.thewinecellar.co.za)

## Midlands Meander

033 330 8195 [info@midlandsmeander.co.za](mailto:info@midlandsmeander.co.za)  
[www.midlandsmeander.co.za](http://www.midlandsmeander.co.za)

